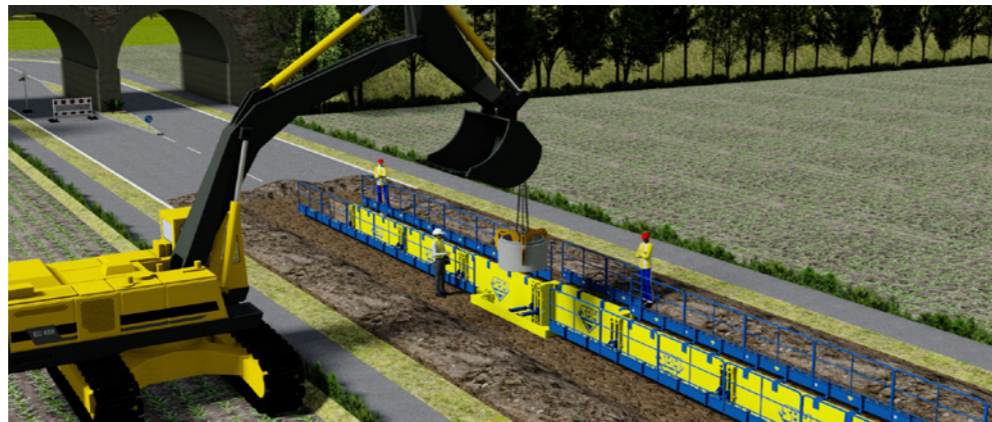


# MANHOLE BOX

## 600 series

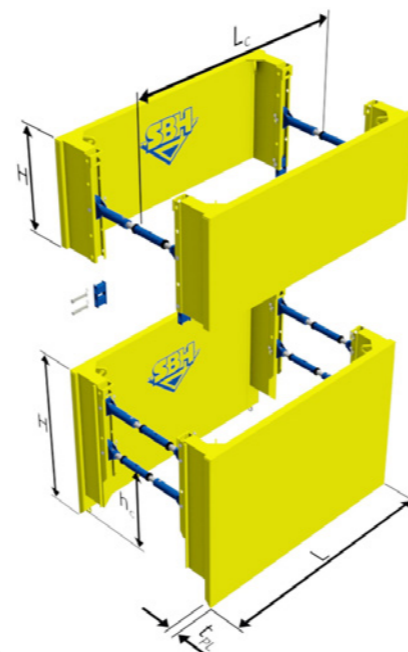
The Manhole Box is used when, in continuous pipeline trenches, wider areas for manholes need to be created. The plate body is U-shaped, and forms a recess of 0.40 m at each side of the trench. The result is a working area of up to 0.80 m wide.

- ▶ The areas before and after the manhole are secured using normal shoring boxes
- ▶ The spindles and accessories used are the same as those for the shoring boxes



### PLATES $t_{pl} = 107.00$ mm

Plate length L [m]	Plate height H [m]	Pipe clearance length $L_c$ [m]	Pipe clearance height $h_c$ [m]	Permissible earth pressure [kN/m <sup>2</sup> ]	Limit state design load $e_d$ / Characteristic system resistance $R_k$ [kN/m <sup>2</sup> ]	Weight per box [kg]
2.50	2.50	2.10	1.69	5,1	75.2	2350.0
	1.50					1620.0
3.00	2.50	2.60	1.69	41.8	62.7	2590.0
	1.50					1780.0
3.50	2.50	3.10	1.69	35.8	53.7	2825.0
	1.50					1940.0
4.00	2.50	3.60	1.69	31.3	47.0	3060.0
	1.50					2095.0



lengths or custom variants upon request.

### ACCESSORIES

You can find the accessory parts

- ▶ Spindle key
- ▶ Spindle adaptor
- ▶ Protection rail
- ▶ 4-fold chain with shortening system
- ▶ Box connectors

for the Manhole Box 600 series on pages 88–91.

