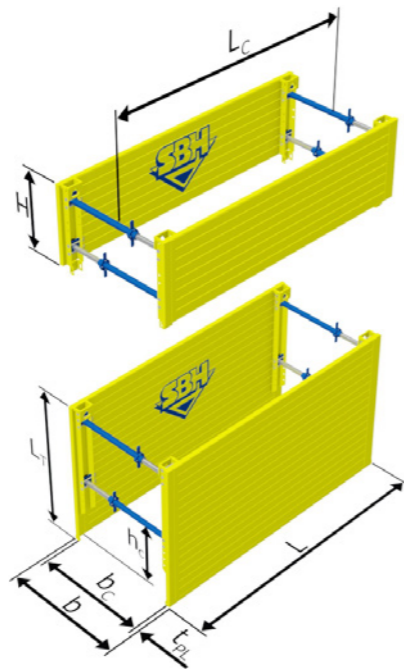


# LIGHTWEIGHT SHORING

## 100 series



The Lightweight Shoring 100 series is ideal for small to medium-sized trenches and the use of light construction machinery.

- ▶ Ideal for supply lines and house connections
- ▶ Smooth-running struts, flexibly mounted in the plate profile, enable quick assembly and easy installation using the place and adjust method, and to a limited extent using the cut and lower method
- ▶ Extendable



### PLATES $t_{pl} = 60.00 \text{ mm}$

Plate length L [m]	Plate height H [m]	Pipe clearance length $L_c$ [m]	Pipe clearance height $h_c$ [m]	Permissible earth pressure [kN/m <sup>2</sup> ]	Limit state design load $e_d$ / Characteristic system resistance $R_k$ [kN/m <sup>2</sup> ]	Weight per box with strut B [kg/Box]
2.00	1.60 / 2.00	1.60	0.94	27.7	41.6	570.0 / 670.0
	0.60 / 1.00					275.0 / 415.0
2.50	1.60 / 2.00	2.10	0.94	22.1	33.2	655.0 / 770.0
	0.60 / 1.00					315.0 / 470.0
3.00	1.60 / 2.00	2.60	0.94	18.5	27.8	745.0 / 875.0
	0.60 / 1.00					355.0 / 525.0
3.50	1.60 / 2.00	3.10	0.94	15.3	23.0	830.0 / 980.0
	0.60 / 1.00					395.0 / 585.0

Other lengths or custom variants upon request

### LIGHTWEIGHT STRUT

Strut type	Working width $b_c$		Trench width $b$		Permissible compressive force [kN]	Weight [kg]
	min	max	min	max		
A	0.53	0.73	0.66	0.86	160.0	14.2
B	0.71	1.07	0.84	1.20	147.0	16.9
C	1.05	1.65	1.18	1.78	124.0	20.9
D	1.50	2.10	1.63	2.23	107.0	23.6
E	1.88	2.48	2.01	2.61	92.0	25.8
F	2.48	3.08	2.61	3.21	69.0	29.3



### ACCESSORIES

You can find the accessory parts

- ▶ 4-fold chain with shortening
- ▶ system Protection rail for the Lightweight Shoring 100 series on pages 88–91.